

DRAFT  
1-A-5B: Lower ground floor - License plan  
(Rev. D 15/06/17)



Key to CCTV

- 360 deg security camera
- Security camera

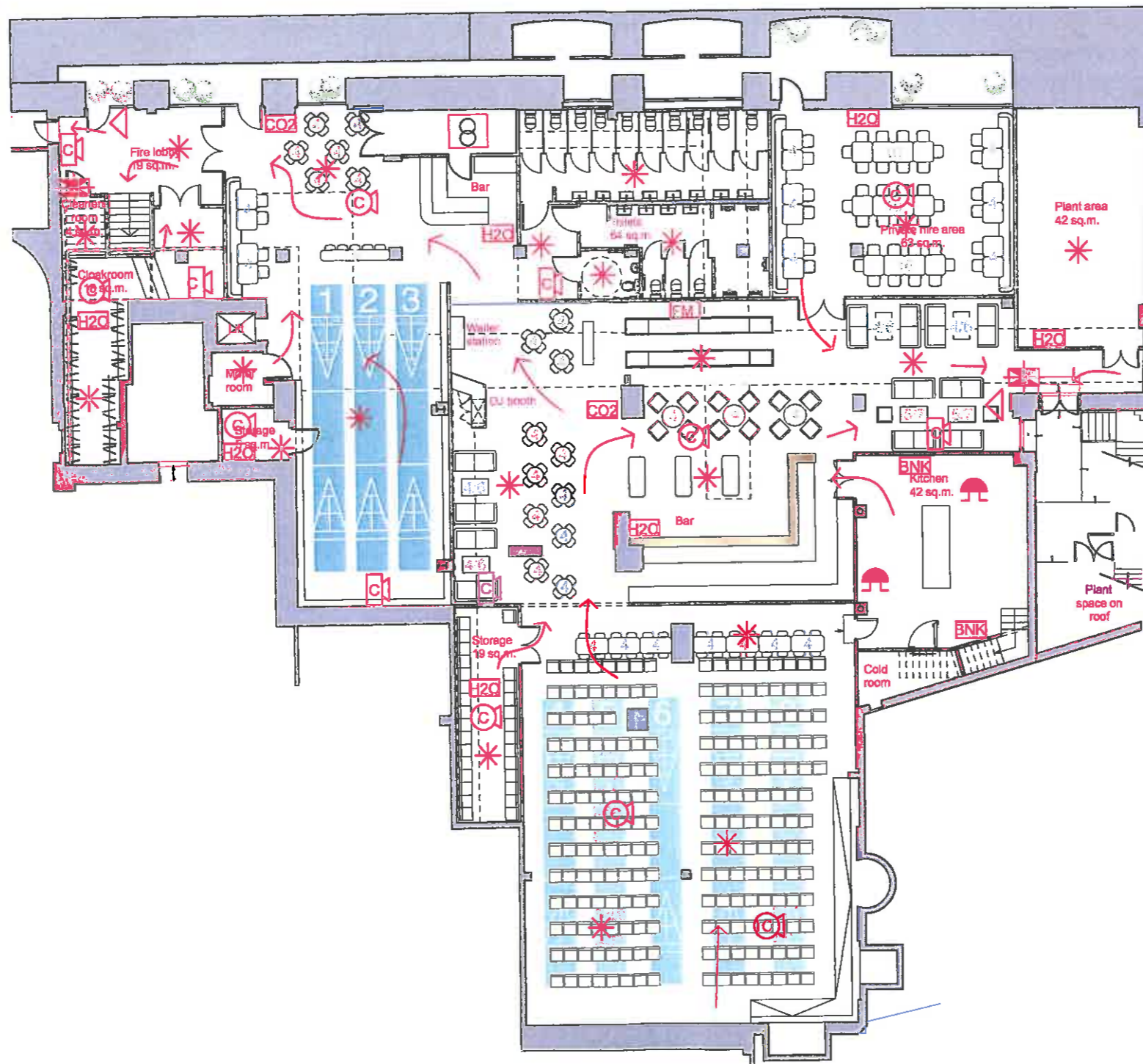
Key to fire fighting equipment

- 2g water extinguisher
- 2.5 lb CO2 extinguisher on wall bracket
- 2g foam extinguisher
- Fire blanket

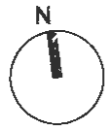
Key to fire fighting detection warning equipment  
To be L1 system

- Emergency light fitting
- Flame heat sensor
- Smoke detector/sounder
- Sounder
- Fire panel (addressable)

Escape direction



DRAFT  
1-A-5A: Ground floor - License plan  
(Rev. D 15/06/17)



Key to CCTV

- 360 deg security camera
- Security camera

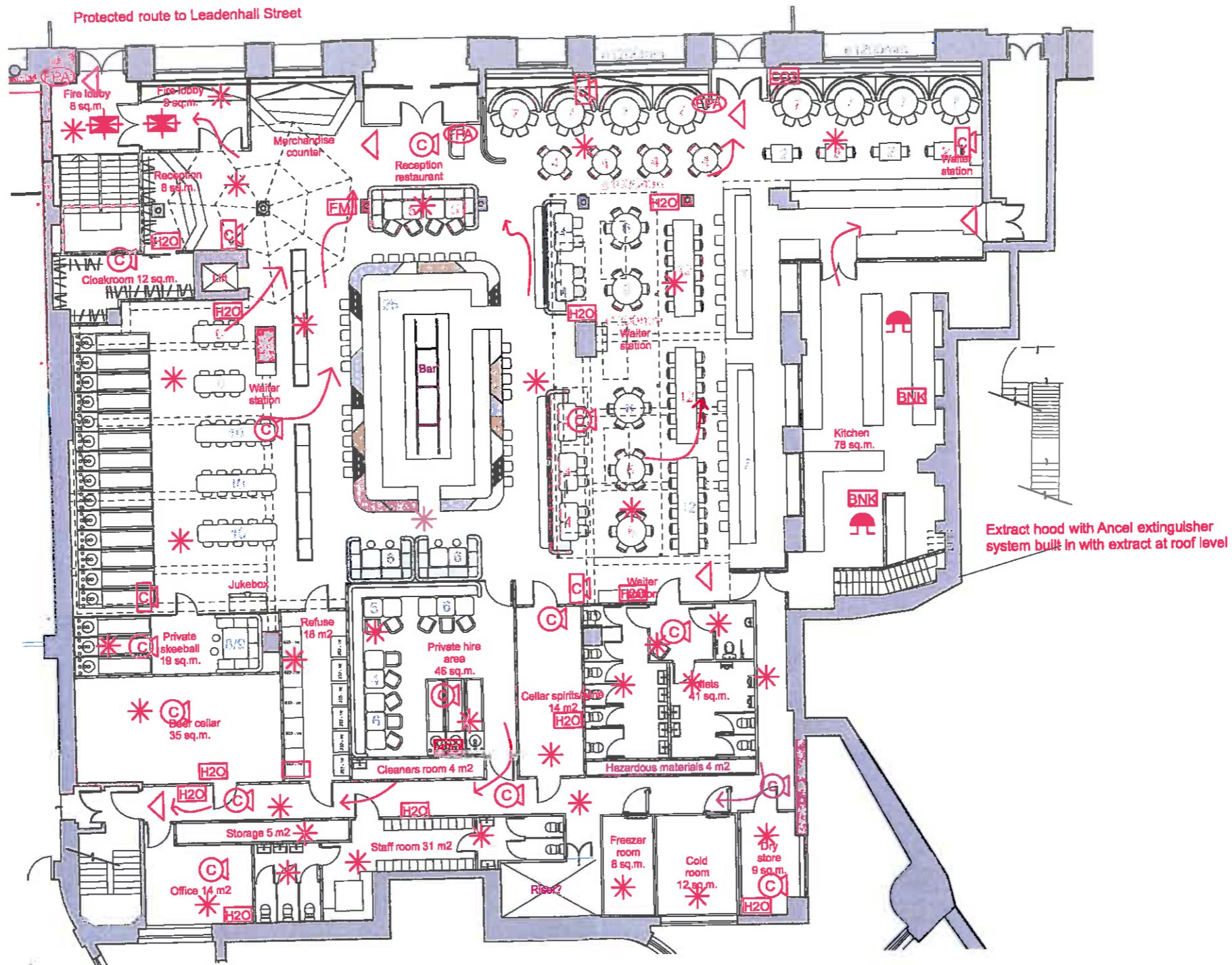
Key to fire fighting equipment

- 2g water extinguisher
- 2.5 lb CO2 extinguisher on wall bracket
- 2g foam extinguisher
- Fire blanket

Key to fire fighting detection warning equipment  
To be L1 system

- Emergency light fitting
- Flame heat sensor
- Smoke detector/sounder
- Sounder
- Fire panel (addressable)

Escape direction



Zachary Pulman Design Consultants

Unit 4 - 7 Wenlock Road, London N1 7SL  
www.zacharypulman.com  
info@zacharypulman.com

Project :  
Brewskee

Scale :  
1:200 @ A3

Dwg no :  
1-A-5A

Revision :  
A 20/04/17  
B 24/04/17  
C 23/05/17  
D 15/06/17  
E  
F

G  
H  
I  
J  
K  
L

Drawing :  
Ground floor - License plan

Units :  
mm

Status :  
DRAFT

\* Do not scale from drawings.  
\* All dimensions to be checked on site by contractor.  
\* All dimensions remain the responsibility of the contractor.  
\* All designs are the property of Zachary Pulman 2017.